

**BOOK
NOW**

RIBA 
Architecture.com

ORGANISED ON BEHALF OF

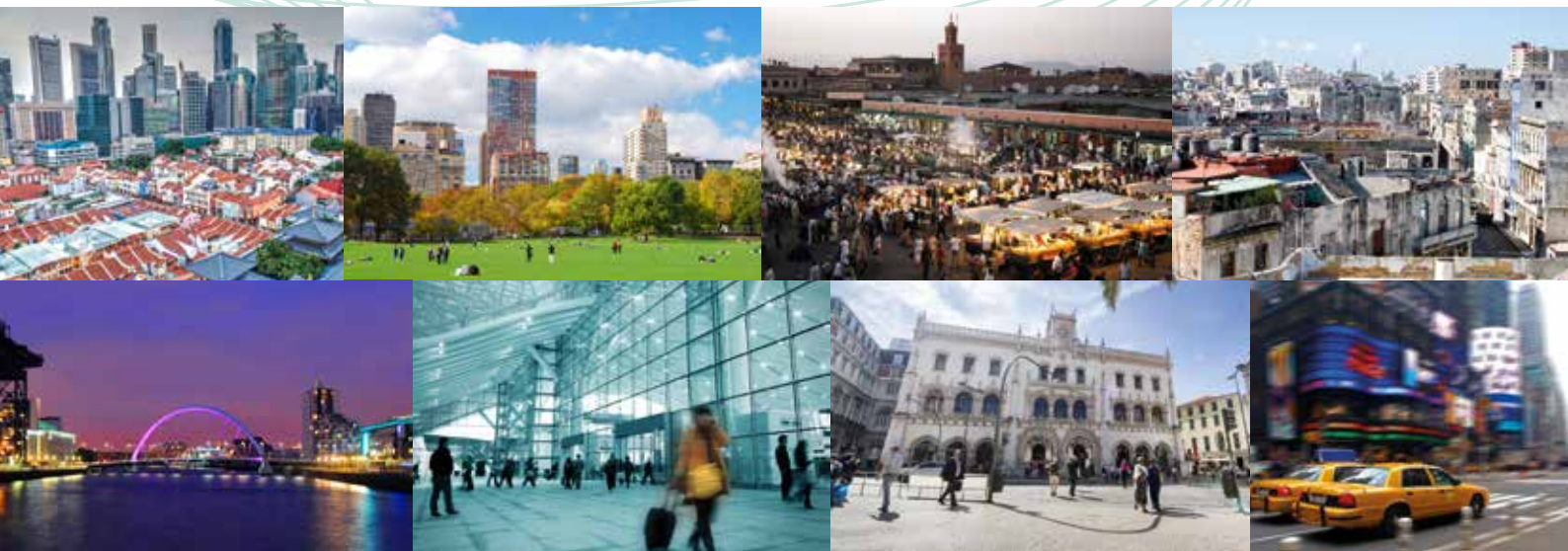


Designing City Resilience

A two day summit

16 and 17 June 2015
66 Portland Place, London
designingcityresilience.com

Content Partners & Sponsors



Designing City Resilience is designed to support an international exchange of ideas between organisations, professions, sectors and cities to bring world-class thinking to the current and future challenges faced by cities across the globe.

SUPPORTERS



MEDIA PARTNERS



Breaking down barriers to build resilient cities

Connect with international experts to shape future thinking on city resilience.

Designing City Resilience is a platform for organisations to forge international relationships; prototype ideas; share knowledge and experiences; and work together to deliver suitable solutions to local and global challenges caused by urbanisation, climate change and trauma.

A city's resilience impacts on the quality of life of its citizens and the health of its economy. Stability and certainty encourage the entrepreneurship, investment and international trade essential to a city's long-term prosperity and growth.

It is also important to recognise how the interdependence of systems, professions, vision, leadership, technology and design creativity can create cities resilient to the physical, social and economic challenges they face in a fast-changing world.

Who you'll meet at the summit

In addition to meeting resilience experts from around the world, this is a unique opportunity for the exchange of ideas between professionals involved in **design and construction; development and infrastructure; city leadership and governance; insurance and finance;** and **technology and communications.**

SHARE knowledge, discover, brainstorm, learn and contribute to establishing a common understanding of designing resilient cities across sectors and disciplines.

NAVIGATE through the emerging – and overwhelming – language, tools and methodologies to better understand the opportunities associated with the need for resilient cities, and explore the role that you can play.

COLLABORATE, foster new relationships, network, connect and engage with fellow professionals and future collaborators across a wide range of professions and sectors.

PARTICIPATE in forging a better future and play your part in the development and dissemination of key recommendations that will form a roadmap for meaningful change.



The City Resilience Challenge

The City Resilience Challenge workshop offers you the opportunity to tackle the challenges faced by cities around the world.

Focusing on the universal threats, challenges and barriers to resilience faced by cities, the Challenge brings together representatives of the key sectors and disciplines driving the future of cities to explore opportunities for collaboration between business, government and civil society.

Work in multi-disciplinary groups to define a vision for city resilience and develop meaningful strategies for achieving it.

Cities contributing to inform the focus of the workshops will include:

- Austin
- Barcelona
- Bristol
- Chennai
- Glasgow
- Manchester
- Melbourne
- New York
- Rio de Janeiro

HEAR FROM CITY REPRESENTATIVES INCLUDING:

GLASGOW

Alastair Brown,
Chief Resilience Officer,
Glasgow City Council

NEW YORK

Daniel A. Zarrilli,
Director NYC Mayor's Office
of Recovery and Resiliency
City of New York

BRISTOL

George Ferguson,
Mayor, *City of Bristol*

MELBOURNE

Toby Kent,
Chief Resilience Officer,
City of Melbourne

BARCELONA

Manuel Valdés López,
Deputy Manager of
Infrastructures and Urban
Coordination, *Barcelona
City Council*

An international exchange of ideas

Collaboration across neighbourhoods, communities, government, industry, sectors and disciplines is fundamental in facilitating the interdependent systems that underpin a city's resilience.

Share ideas and formulate strategies to recommend and implement meaningful principles to make better cities, capable of coping with the stresses of mass urbanisation, climate change and unexpected shocks to the system.

Explore how to make your city more resilient through:

- Design
- Policy
- Governance
- Investment
- Technologies
- Risk strategies



DAY 1: 16 June 2015



Matthew Taylor, Chief Executive, Royal Society of the Arts (RSA)



Kamallesh Sharma, Secretary General, Commonwealth



Jo da Silva, Director, International Development, Arup



Manuel Valdez Lopes, Deputy Manager of Infrastructures and Urban Coordination, Barcelona City Council



Helle Soholt, Founding Partner & CEO, Gehl Architects



Sascha Haselmayer, Chief Executive, Citymart



George Ferguson, Mayor, City of Bristol



Stephen Hodder, President, RIBA

08:10 Registration

09:00 Opening from Chair **Matthew Taylor**, Chief Executive, Royal Society of the Arts (RSA)

09:10 Introduction and welcome address

H.E. Kamallesh Sharma, Secretary General, Commonwealth
Stephen Hodder, President, RIBA
Rukshan Widyalkara, President, CAA

09:20 Defining urban resilience

This session seeks to define city resilience and explore the policy landscape, governance structures and behaviours that enable it. Cities face a number of common challenges in managing urban growth, climate change and unexpected shocks. Recognising cities as interdependent systems, this session will explore how multiple sectors and disciplines can work together to build resilience and help you understand your role in achieving this.

Ricky Burdett, Professor of Urban Studies, London School of Economics (LSE)

Jo da Silva, Director, International Development, Arup

Nancy Kete, Managing Director, Rockefeller Foundation

10:20 City Spotlight: BARCELONA

Barcelona has been grappling with a history of infrastructure failures and pollution and is now turning its attention to addressing its challenges around social cohesion and high levels of unemployment.

Manuel Valdes Lopez, Deputy Manager of Infrastructures and Urban Coordination, Barcelona City Council

10:45 Networking Break

11:10 City Spotlight: BRISTOL

Bristol is experiencing rapid growth and is investing in renewing its infrastructure. The city's vision is one of decentralised governance structures, empowering citizens, minimising risk and creating a more resource efficient future.

George Ferguson, Mayor, City of Bristol

11:30 Designing places for people

How can cities optimise liveability and improve societal outcomes for citizens? If human interaction and integration of existing characteristics into planning and design are central to a city's resilience, should a city be designed around its citizens and what does this mean in practice?

Sascha Haselmayer, Chief Executive, Citymart

Charles Landry, Cities Consultant

Saskia Sassen, Professor of Sociology, Columbia University

Helle Soholt, Founding Partner & CEO, Gehl Architects

12:30 Summit Lunch

13:30 Introduction to City Resilience Challenge

Based on the challenges faced by actual cities around the world, each group will create a vision for city resilience, alongside strategies for achieving it.

Each workshop will be led by an appointed Mayor addressing the real life challenges faced by cities around the world.

Introductions from Appointed Mayors

The Appointed Mayor from each of the four cities will outline the resilience challenges they face, outlining each in relation to their individual characteristics according to political context, economic and social environment.

Appointed Mayors will include:

Peter Bishop, Professor of Urban Design, The Bartlett School of Architecture, University College London (UCL)

Peter Head, Executive Chairman, Ecological Sequestration Trust

Rod McDonald, Chairman, Civic Partners

Panels of Subject Matter Experts will support Challenge groups. As well as a number of speakers from the programme, additional experts will include:

Kelvin Campbell, Founder, Smart Urbanism

Carina Lopes, Partner, Citymart

Tim Stonor, Managing Director, Space Syntax

14:00 City Resilience Challenge begins

Summit participants will break up into workshop groups to tackle challenges and work on resilience visions for different scenarios based around the globe

16:10 Networking Break

16:35 The role of technology in improving resilience

How can technology improve a city's resilience, in terms of infrastructure maintenance, renewal, operation and citizen experience? Find more about what these technologies are and the ways in which they can facilitate more efficient and liveable cities.

Martin Powell, Head of Urban Development, Global Cities Centre of Competence, Siemens

Rick Robinson, IT Director, Smart Data and Technology, Amey

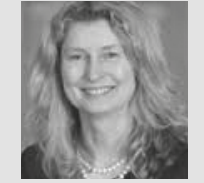
Dan Hill, Executive Director & Chief Design Officer, Future Cities Catapult

17:15 Press Conference

The Press Conference will be a chance for the Chair and summit participants to quiz each Appointed Mayor on their group's progress. This will pull together the day's themes and findings from each city's working group.

18:00 Close of Day 1

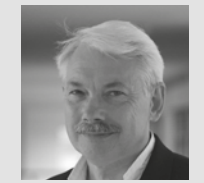
18:30 RIBA President's Drinks



Nancy Kete, Managing Director, Rockefeller Foundation



Kelvin Campbell, Founder, Smart Urbanism



Peter Head, Executive Chairman, Ecological Sequestration Trust



Ricky Burdett, Professor of Urban Studies, London School of Economics (LSE)



Saskia Sassen, Professor of Sociology, Columbia University



Charles Landry, Cities Consultant

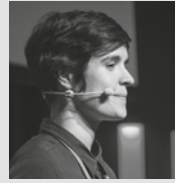


Peter Bishop, Professor of Urban Design, The Bartlett School of Architecture, University College London (UCL)



Martin Powell, Head of Urban Development, Global Cities Centre of Competence, Siemens

DAY 2: 17 June 2015



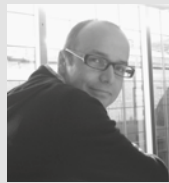
Carina Lopes,
Partner, Citymart



Alastair Brown,
Chief Resilience
Officer, Glasgow
City Council



Toby Kent,
Chief Resilience
Officer, City of
Melbourne



Tim Stonor,
Managing Director,
Space Syntax



Kate Brown,
Group Sustainability
Director, Grosvenor



Rick Robinson,
IT Director,
Smart Data and
Technology, Amey



Julia Brickell,
Head – Hong Kong,
Regional Climate
Change Anchor,
Cities Program
Lead, International
Finance
Corporation (IFC)



Daniel Moylan,
TfL Board Member,
Mayor's Adviser on
Aviation & Crossrail
2, Transport for
London

08:30 Registration

09:00 Introduction from Chair

Matthew Taylor, Chief Executive,
Royal Society of the Arts (RSA)

09:10 City resilience: Vision, strategy, barriers and lessons so far

The job of the Chief Resilience Officer is to establish a vision for city resilience, designing a strategy to support it, and facilitate cross agency, cross sector and cross discipline collaboration to achieve it. What does this mean in practice and what challenges do they face?

Alastair Brown, Chief Resilience
Officer, Glasgow City Council

Toby Kent, Chief Resilience Officer,
City of Melbourne

Alessandro Coppola, Chief
Resilience Officer, City of Rome

09:50 Creating long- term value through innovative city investment strategies

Responding to and managing the stresses of rapid rises in urbanisation, climate change and other shocks to the system requires investment and access to knowledge, support, and increased capacity. Find out more about investment strategies and approaches and understand your role in raising the investment profile of your city.

Julia Brickell, Head – Hong Kong,
Regional Climate Change Anchor,
Cities Program Lead, International
Finance Corporation (IFC)

Kate Brown, Group Sustainability
Director, Grosvenor

Brian Field, Urban Planning and
Development Adviser, European
Investment Bank

10:35 Networking Break

11:00 City Resilience Challenge resumes

Challenge groups will reform and build on the work of day 1.

12:30 Summit Lunch

13:30 City Spotlight

13:50 Climate change and shocks to the system: Risk management strategies that create opportunity for cities

As well as a mechanism for managing risks, the focus on resilience provides a platform for opportunity. What are the behaviours and approaches that help cities manage growth, improve business competitiveness and enhance liveability and what does this mean for the way you should manage risk?

Greg Lowe, Executive Director,
Capital, Science and Policy Practice,
Willis Group

Peter Williams, CTO, IBM Big
Green Innovations

Daniel Moylan, TfL Board Member,
Mayor's Adviser on Aviation &
Crossrail 2, Transport for London

14:30 City Resilience Challenge resumes

Challenge groups will reform for the final session of the City Resilience Challenge, in preparation for the final presentation of their work.

16:00 Networking Break

16:25 City Vision Presentations

Drawing on the conversations and work contributed during the City Resilience Challenge over the two days of the summit, the Appointed Mayors will present the resulting city visions and supporting resilience strategies, which will be opened up to the floor, and a panel of city representatives, for critique and discussion.

17:30 Summary & Close



Peter Williams,
CTO, IBM Big
Green Innovations



Rod MacDonald,
Chairman,
Civic Partners



Brian Field,
Urban Planning
and Development
Adviser, European
Investment Bank



Greg Lowe,
Executive Director,
Capital, Science
and Policy Practice,
Willis Group



Dan Hill, Executive
Director & Chief
Design Officer, Future
Cities Catapult



Peter Oborn,
Vice President
International, RIBA



Alessandro
Coppola, Chief
Resilience Officer,
City of Rome

“We are looking forward to taking part in Designing City Resilience and to engaging with colleagues from cities across the world to explore how urban resilience can be facilitated and strengthened.”

Lord Peter Smith, Chair of Greater Manchester Combined Authority, Leader of Wigan Metropolitan Borough Council

“The summit provides an excellent opportunity to explore how sustainability, responsible use of land and the design and construction of buildings, infrastructure and the public realm can create resilient cities that are attractive to investors”

Kate Brown, Group Sustainability Director for Grosvenor

“City resilience requires cross-functional engagement between professionals and the summit’s format, particularly the City Resilience Challenge, presents a great opportunity to break down barriers between professions, to build trust and agree a common language of resilience.”

Sir Brendan Gormley, international development consultant

“The aim is to have outcomes that are accessible to as wide an audience as possible.”

Matthew Taylor, Chief Executive, RSA

Book
your place
online now

To find out more about rates and to book your place visit

www.designingcityresilience.com/book-now-2/